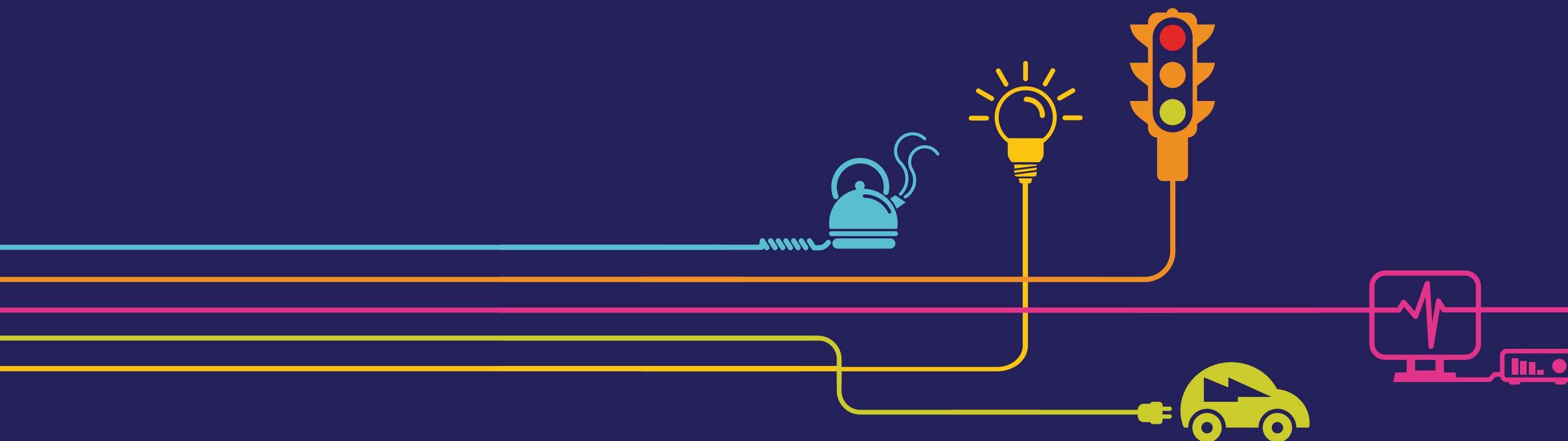


# Environmental Statement Visual Effects Figures 7.15 to 7.17

Hinkley Point C Connection Project

*Regulation 5(2)(a) of the Infrastructure Planning  
(Applications: Prescribed Forms and Procedure)  
Regulations 2009*



## Environmental Statement

### Hinkley Point C Connection Project

#### 5.7.3 – Visual Effects – Figures (orange highlight indicates the contents of this Volume)

Figure	Title
<b>Volume 5.7.3.1</b>	
7.1	Zone of Theoretical Visual Influence
7.2	Visual Receptors within 1km
<b>Volume 5.7.3.2</b>	
7.3	Long Distance Routes within 3km and Valued Views beyond 3km
7.4	Sequential and Representative Visual Receptors beyond 1 and 3km
<b>Volume 5.7.3.3</b>	
7.5	Photograph Viewpoint Locations within 1km
7.6	Section A: Photographs of Existing Views within 1km
<b>Volume 5.7.3.4</b>	
7.7	Section B: Photographs of Existing Views within 1km
<b>Volume 5.7.3.5</b>	
7.8	Section C: Photographs of Existing Views within 1km
7.9	Section D: Photographs of Existing Views within 1km
<b>Volume 5.7.3.6</b>	
7.10	Section E: Photographs of Existing Views within 1km
7.11	Section F: Photographs of Existing Views within 1km
<b>Volume 5.7.3.7</b>	
7.12	Section G: Photographs of Existing Views within 1km
7.13	Photograph Viewpoint Locations between 1 and 3km
<b>Volume 5.7.3.8</b>	
7.14	Photograph Viewpoint Locations beyond 3km
<b>Volume 5.7.3.9</b>	
7.15	Sections A: Photographs of Existing Views between 1 and 3km and beyond 3km
7.16	Section B: Photographs of Existing Views between 1 and 3km and beyond 3km
7.17	Section C: Photographs of Existing Views between 1 and 3km and beyond 3km
<b>Volume 5.7.3.10</b>	
7.18	Section D: Photographs of Existing Views between 1 and 3km and beyond 3km
7.19	Section E: Photographs of Existing Views between 1 and 3km and beyond 3km
7.20	Section F: Photographs of Existing Views between 1 and 3km and beyond 3km
7.21	Section G: Photographs of Existing Views between 1 and 3km and beyond 3km
7.22	Visual Receptors within 1km: Hinkley Line Entries
7.23	Sequential and Representative Visual Receptors between 1 and 3km and Valued Views beyond 3km: Hinkley Line Entries
7.24	Photograph Viewpoint Locations within 1km: Hinkley Line Entries
<b>Volume 5.7.3.11</b>	
7.25	Photographs of Existing Views within 1km: Hinkley Line Entries



Figure	Title
7.26	Photograph Viewpoint Locations between 1 and 3km and beyond 3km: Hinkley Line Entries
7.27	Photographs of Existing Views between 1 and 3km and beyond 3km: Hinkley Line Entries
7.28	Significance of Visual Effects on Receptors within 1km during Construction
<b>Volume 5.7.3.12</b>	
7.29	Significance of Visual Effects on Receptors between 1 and 3km and beyond 3km during Construction
<b>Volume 5.7.3.13</b>	
7.30	Significance of Visual Effects on Receptors within 1km during Operation
7.31	Significance of Visual Effects on Receptors between 1 and 3km and beyond 3km during Operation
<b>Volume 5.7.3.14</b>	
7.32	Bridgwater Tee CSE Compound – Landscape Mitigation and Detailed Planting Plans
7.33	South of Mendip Hills 400kV CSE Compound – Landscape Mitigation and Detailed Planting Plans
7.34	River Axe Cable Bridge Option – Landscape Mitigation and Detailed Planting Plan
7.35	Sandford 400kV/132kV Substation - Landscape Mitigation and Detailed Planting Plans
7.36	Towerhead Brook Bridge - Landscape Mitigation and Detailed Planting Plan
7.37	Significance of Visual Effects on Receptors within 1km during Construction: Hinkley Line Entries
7.38	Significance of Visual Effects on Receptors between 1 and 3km and beyond 3km during Construction: Hinkley Line Entries
7.39	Significance of Visual Effects on Receptors within 1km on Completion: Hinkley Line Entries
7.40	Significance of Visual Effects on Receptors between 1 and 3km and beyond 3km on Completion: Hinkley Line Entries

Figure 7.15 - Section A: Photographs of Existing Views between 1 and 3km and beyond 3km





Photograph A2.1: Existing view from properties on high ground on Bawdrip Lane, looking west across Horsey Level and Puriton Ridge towards the F Route with the VQ Route and the route of the proposed 400kV overhead line and CSE compounds beyond. Representative of views from properties in Bawdrip and on the A39 Bath Road



Photograph A2.2: Existing view from properties on level ground on Bawdrip Lane, looking west across Horsey Level and Puriton Ridge towards the F Route with the VQ Route beyond and the route of the proposed 400kV overhead line filtered by trees. Representative of views from properties in Bawdrip



Photograph A2.3: Existing view from public right of way BW2/11 and National Cycle Route 3 Stop Line Way along King’s Sedgemoor Drain at Bradney Bridge, looking northwest towards Puriton Ridge with the F Route overhead line visible passing over the Drain and Puriton Ridge, representative of views along King’s Sedgemoor Drain from Bradney Bridge

A	22/03/2014	DCO SUBMISSION	JS	NH	NH
ISSUE	DATE	COMMENTS	DRAW	CHKD	APP'D

Title  
NATIONAL GRID (HINKLEY POINT C CONNECTION PROJECT)  
ENVIRONMENTAL STATEMENT  
VOLUME 5.7.3  
  
SECTION A: PHOTOGRAPHS OF EXISTING VIEWS BETWEEN 1 AND 3KM AND BEYOND 3KM

nationalgrid <small>National Grid plc, Warwick Technology Park, Gallows Hill, Warwick, CV34 6DA</small>			
NG INVESTMENT No.	APPLICATION No.		IN
20897	EN020001		A3
FIGURE No.	DRAWING No.	SCALE	
7.15.1	IN1979.24.011	NTS	
SHEET 1 OF 12			ISSUE
			A





Photograph A2.3b: Existing view from public right of way BW2/2 (on the mound adjacent BW2/10) along King’s Sedgemoor Drain, looking northwest towards the F Route overhead line visible passing over the Levels and Knowle Hill, with the VQ Route visible above trees in the distance across Horsey Level. Representative of views from public rights of way near King’s Sedgemoor Drain.



Photograph A2.4: Existing view from public right of way BW2/50 north of Bradney, looking northwest along the F Route with the VQ Route and the route of the proposed 400kV overhead line and CSE compounds visible to the west above trees across the Levels and passing over Puriton Ridge. Representative of views from public footpaths, properties and roads in Bradney



Photograph A2.5: Existing view from public footpath on the northern boundary of Chedzoy, looking northwest across the Levels towards Puriton Ridge with the F Route and the VQ Route visible parallel to the west; and the route of the proposed 400kV overhead line and CSE compounds visible in the distance above trees across Horsey Level and on Puriton Ridge. Representative of views from the footpath network, public open space and properties on the northern edge of Chedzoy

A	22/03/2014	DCO SUBMISSION	JS	NH	NH
ISSUE	DATE	COMMENTS	DRAW	CHK'D	APP'D
<div>Title</div> <div>NATIONAL GRID (HINKLEY POINT C CONNECTION PROJECT) ENVIRONMENTAL STATEMENT VOLUME 5.7.3</div> <div>SECTION A: PHOTOGRAPHS OF EXISTING VIEWS BETWEEN 1 AND 3KM AND BEYOND 3KM</div>					
<div><div><div>nationalgrid</div></div><div>National Grid plc, Warwick Technology Park, Galloway Hill, Warwick, CV34 6DA</div></div>					
NG INVESTMENT No.	APPLICATION No.		IN		
20897	EN020001		A3		
FIGURE No.	DRAWING No.		SCALE		
7.15.2	IN1979.24.011		NTS		
SHEET 2 OF 12			ISSUE		
			A		





Photograph A2.6: Existing view from Front Street in Chedzoy, looking northwest across the Levels towards the F Route and VQ Route overhead lines visible above trees, vegetation and properties with the route of the proposed 400kV overhead line anticipated to be just visible above trees and on Puriton Ridge in the distance. Representative of views from Samaritans Way long distance route, Long Distance Cycle Route 3 Stop Line Way, roads and properties on the south western edge of Chedzoy



Photograph A2.7: Existing view from public right of way in Slape Cross adjacent to West End Cottages, looking north along the F Route and VQ Route overhead lines with the route of the proposed 400kV overhead line visible in the distance above trees beyond the VQ Route and on Puriton Ridge. Representative of public rights of way, properties and Higher Road in Slape Cross



Photograph A2.8: Existing view from the A39 Bath Road, on the bridge over the M5 motorway, looking northeast towards the VQ Route overhead line visible above trees and properties with the route of the proposed 400kV overhead line visible beyond across Horsey Level and on Puriton Ridge

A	22/03/2014	DCO SUBMISSION	JS	NH	NH
ISSUE	DATE	COMMENTS	DRAW	CHKD	APP'D

Title  
NATIONAL GRID (HINKLEY POINT C  
CONNECTION PROJECT)  
ENVIRONMENTAL STATEMENT  
VOLUME 5.7.3  
  
SECTION A: PHOTOGRAPHS OF EXISTING  
VIEWS BETWEEN 1 AND 3KM AND BEYOND 3KM

nationalgrid <small>National Grid plc, Warwick Technology Park, Gallows Hill, Warwick, CV34 6DA</small>			
NG INVESTMENT No.	APPLICATION No.		IN
20897	EN020001		A3
FIGURE No.	DRAWING No.	SCALE	
7.15.3	IN1979.24.011	NTS	
SHEET 3 OF 12			ISSUE
			A





Photograph A2.9: Existing view from Bower Lane, looking northeast towards the M5 motorway with the VQ Route and F Route overhead lines beyond and the route of the proposed 400kV overhead line anticipated to be just perceptible in the distance above trees and on Puriton Ridge. Representative of views from roads, footpaths and properties on the eastern edge of Bridgwater, south of the A39, and from the M5 motorway



Photograph A2.10: Existing view from the Samaritans Way long distance route on a footbridge over the M5 motorway on the eastern edge of Bridgwater, looking north along the M5 motorway and the VQ Route and F Route overhead lines with the route of the proposed 400kV overhead line visible in the distance across Horsey Level and on Puriton Ridge. Representative of views from footpaths between Bridgwater and Chedzoy and the M5 motorway



Photograph A2.11: Existing view from The Exchange Conference Centre car park, looking northeast with the VQ Route visible above buildings and the route of the proposed 400kV overhead line just visible beyond at Horsey Level and on Puriton Ridge. Representative of views from footpaths, roads, businesses and industry on the northern edge of Bridgwater on the A38 Bristol Road



Photograph A2.12: Existing view from Trinity Waters Fishery, looking northeast with the VQ Route overhead line visible above vegetation and Puriton Ridge in the distance. Representative of views from Trinity Waters Fishery, Lower Lake Lodges and public footpaths and amenities west of the River Parrett

A	22/03/2014	DCO SUBMISSION	JS	NH	NH
ISSUE	DATE	COMMENTS	DRAW	CHKD	APP'D

Title  
NATIONAL GRID (HINKLEY POINT C  
CONNECTION PROJECT)  
ENVIRONMENTAL STATEMENT  
VOLUME 5.7.3  
  
SECTION A: PHOTOGRAPHS OF EXISTING  
VIEWS BETWEEN 1 AND 3KM AND BEYOND 3KM

<div><div></div><div>nationalgrid</div></div> <div>National Grid plc, Warwick Technology Park, Galloway Hill, Warwick, CV34 6DA</div>			
<div>NG INVESTMENT No.</div> <div>20897</div>	<div>APPLICATION No.</div> <div>EN020001</div>		<div>IN</div> <div>A3</div>
<div>FIGURE No.</div> <div>7.15.4</div>	<div>DRAWING No.</div> <div>IN1979.24.011</div>	<div>SCALE</div> <div>NTS</div>	
<div>SHEET 4 OF 12</div>			<div>ISSUE</div> <div>A</div>





Photograph A2.13: Existing view from the east carriageway of the A38 Bristol Road, north of Bridgwater, looking east towards the Morrisons distribution centre and the M5 motorway with the route of the proposed 400kV overhead line visible above trees across Horsey Level and on Puriton Ridge in the distance. Representative of road users, properties, businesses and the M5 motorway



Photograph A2.14: Existing view from public right of way between Pawlett Road and Downend Road, looking east towards Puriton Ridge above properties and trees. Representative of views from footpaths and properties in Down End



Photograph A2.15: Existing view from PRow off Puriton Road, near Walpole, looking northeast towards mature boundary trees with a ZG Route pylon visible above and the route of the proposed 400kV overhead line screened. Representative of PRow and properties in Walpole

A	22/03/2014	DCO SUBMISSION	JS	NH	NH
ISSUE	DATE	COMMENTS	DRAW	CHK'D	APP'D
<div>Title</div> <div>NATIONAL GRID (HINKLEY POINT C CONNECTION PROJECT) ENVIRONMENTAL STATEMENT VOLUME 5.7.3</div> <div>SECTION A: PHOTOGRAPHS OF EXISTING VIEWS BETWEEN 1 AND 3KM AND BEYOND 3KM</div>					
<div><div><div>nationalgrid</div><div>National Grid plc, Warwick Technology Park, Gallow's Hill, Warwick, CV34 6DA</div></div></div>					
NG INVESTMENT No.		APPLICATION No.		IN A3	
20897		EN020001			
FIGURE No.		DRAWING No.		SCALE	
7.15.5		IN1979.24.011		NTS	
SHEET 5 OF 12				ISSUE	
				A	





Photograph A2.16: Existing view from public right of way at Coombe Lane on the eastern edge of Woolavington, looking northwest over rooftops with the VQ Route visible across the Levels above trees; and the F Route and the route of the proposed 400kV overhead line visible beyond with Brent Knoll in the distance. Representative of views from footpaths and properties on the eastern edge of Woolavington




Photograph A2.17: Existing view from public right of way on the west edge of Cossington, looking northwest across the Levels towards the VQ Route with the F Route and the route of the proposed 400kV overhead line visible in the distance beyond above trees with Brent Knoll visible further north. Representative of views from public rights of way and properties on the northwest edge of Cossington



Photograph A2.18: Existing view from public right of way BW2/36 off the A39 Bath Road north of Stawell, looking west across fields with distant views of the F Route and VQ Route just perceptible above trees and the route of the proposed 400kV overhead line at Horsey Level, backgrounded by the Quantock Hills. Representative of receptors on the A39 Bath Road north of Stawell

A	22/03/2014	DCO SUBMISSION	JS	NH	NH
ISSUE	DATE	COMMENTS	DRAW	CHKD	APP'D

Title  
NATIONAL GRID (HINKLEY POINT C  
CONNECTION PROJECT)  
ENVIRONMENTAL STATEMENT  
VOLUME 5.7.3  
  
SECTION A: PHOTOGRAPHS OF EXISTING  
VIEWS BETWEEN 1 AND 3KM AND BEYOND 3KM



National Grid plc, Warwick Technology Park, Galloway Hill, Warwick, CV34 6DA

NG INVESTMENT No.	APPLICATION No.		IN  A3
20897	EN020001		
FIGURE No.	DRAWING No.	SCALE	
7.15.6	IN1979.24.011	NTS	
SHEET 6 OF 12			ISSUE
			A





Photograph A2.19: Existing view from public right of way BW31/3 on the north edge of Stawell, looking northwest across fields towards Puriton Ridge with distant views of the F Route overhead line on Knowle Hill. Representative of views from the west edge of Stawell



Photograph A2.20: Existing view from public right of way on Pendon Hill, looking west with the F Route visible across the Levels and on Puriton Ridge, and the VQ Route and the route of the proposed 400kV overhead line visible beyond in the distance. Representative of views from the local public footpath network and Woodlane Farm



Photograph A2.21: Existing view from public right of way BW2/11 and National Cycle Route 3 Stop Line Way along King’s Sedgemoor Drain, looking northwest with the F Route visible across the Levels and on Puriton Ridge and the VQ Route and route of the proposed 400kV overhead line visible beyond in the distance. Representative of views from footpaths, cycleways and Parchey Bridge

A	22/03/2014	DCO SUBMISSION	JS	NH	NH
ISSUE	DATE	COMMENTS	DRAW	CHKD	APP'D

Title  
NATIONAL GRID (HINKLEY POINT C CONNECTION PROJECT)  
ENVIRONMENTAL STATEMENT  
VOLUME 5.7.3

SECTION A: PHOTOGRAPHS OF EXISTING VIEWS BETWEEN 1 AND 3KM AND BEYOND 3KM

nationalgrid			
National Grid plc, Warwick Technology Park, Gallows Hill, Warwick, CV34 6DA			
NG INVESTMENT No.	APPLICATION No.		IN
20897	EN020001		A3
FIGURE No.	DRAWING No.	SCALE	
7.15.7	IN1979.24.011	NTS	
SHEET 7 OF 12			ISSUE
			A





Photograph A2.22: Existing view from Straight Drove on the north edge of Westonzoyland, looking northwest across fields with an existing 132kV overhead line visible beyond trees and the F Route and VQ Route visible in the distance to the west on Puriton Ridge. Representative of views on the northern edge of Westonzoyland



Photograph A2.23: Existing view from public right of way BW36/2 on the west edge of Westonzoyland, looking northwest across fields with an existing 132kV overhead line visible beyond trees and the F Route and VQ Route visible in the distance. The route of the proposed 400kV overhead line is anticipated to be just visible in the distance on Puriton Ridge. Representative of views on the west edge of Westonzoyland



Photograph A2.24: Existing view from River Lane, part of National Cycle Route 3 Stop Line Way, east of Dunwear, looking north towards 132kV overhead lines connecting to Bridgwater substation beyond trees, with the F Route and VQ Route overhead lines visible beyond above trees. Representative of views from roads, cycleways and footpaths south of Bridgwater substation

A	22/03/2014	DCO SUBMISSION	JS	NH	NH
ISSUE	DATE	COMMENTS	DRAW	CHKD	APP'D

<u>Title</u> NATIONAL GRID (HINKLEY POINT C CONNECTION PROJECT) ENVIRONMENTAL STATEMENT VOLUME 5.7.3  SECTION A: PHOTOGRAPHS OF EXISTING VIEWS BETWEEN 1 AND 3KM AND BEYOND 3KM					
--	--	--	--	--	--

<div><div>nationalgrid</div><div>National Grid plc, Warwick Technology Park, Gallow's Hill, Warwick, CV34 6DA</div></div>			
NG INVESTMENT No.	APPLICATION No.		IN
20897	EN020001		A3
FIGURE No.	DRAWING No.	SCALE	
7.15.8	IN1979.24.011	NTS	
SHEET 8 OF 12			ISSUE
			A





Photograph A2.25: Existing view from PRow BW23/69 (also National Cycle Route 33 and the River Parrett Trail long distance route) crossing the M5 footbridge between Huntworth and Stock Moor, looking north along the motorway towards Bridgwater substation and the VQ Route and F Route overhead lines. The route of the proposed 400kV overhead line on Puriton Ridge is anticipated to be barely perceptible due to distance



Photograph A2.26: Existing view from Follets Farm on the south east edge of Bridgwater, looking east across fields towards trees bounding the M5 motorway with the VQ Route visible above. Representative of views from the southeast edge of Bridgwater



Photograph A2.27a: Existing view from PRow BW3/14, off Westonzoyland Road near Bridgwater Substation, looking north along the F Route and the VQ Route towards the Puriton Ridge and the route of the proposed 400kV overhead line in the distance. Representative of views from PRow, properties and roads near Bridgwater Substation

A	22/03/2014	DCO SUBMISSION	JS	NH	NH
ISSUE	DATE	COMMENTS	DRAW	CHKD	APP'D

<u>Title</u> NATIONAL GRID (HINKLEY POINT C CONNECTION PROJECT) ENVIRONMENTAL STATEMENT VOLUME 5.7.3  SECTION A: PHOTOGRAPHS OF EXISTING VIEWS BETWEEN 1 AND 3KM AND BEYOND 3KM					
--	--	--	--	--	--

National Grid plc, Warwick Technology Park, Gallows Hill, Warwick, CV34 6DA

NG INVESTMENT No.	APPLICATION No.		IN
20897	EN020001		A3
FIGURE No.	DRAWING No.	SCALE	
7.15.9	IN1979.24.011	NTS	
SHEET 9 OF 12			ISSUE
			A





Photograph A2.27b: Existing view from PRow BW3/1, adjacent to Bridgwater Substation off Westonzoyland Road, looking north through field boundary trees and hedge towards The Lodge. Representative of views from PRow, properties and roads near Bridgwater Substation

A	22/03/2014	DCO SUBMISSION	JS	NH	NH
ISSUE	DATE	COMMENTS	DRAW	CHK'D	APP'D
Title					
NATIONAL GRID (HINKLEY POINT C CONNECTION PROJECT) ENVIRONMENTAL STATEMENT VOLUME 5.7.3					
SECTION A: PHOTOGRAPHS OF EXISTING VIEWS BETWEEN 1 AND 3KM AND BEYOND 3KM					
nationalgrid					
National Grid plc, Warwick Technology Park, Gallows Hill, Warwick, CV34 6DA					
NG INVESTMENT No.	APPLICATION No.			IN	
20897	EN020001			A3	
FIGURE No.	DRAWING No.			SCALE	
7.15.10	IN1979.24.011			NTS	
SHEET 10 OF 12				ISSUE	
				A	





Photograph A3.1: Existing view from public right of way on the western edge of Edington, looking northwest across the Levels (in Section B) with the ZG Route just visible above trees and the route of the proposed 400kV overhead line anticipated to be barely perceptible in the distance beyond. Representative of views from footpaths and properties on the western edge of Edington



Photograph A3.2: Existing view from public right of way on the west edge of Catcott, looking northwest across the Levels (in Section B) with the ZG Route just visible above trees and the route of the proposed 400kV overhead line anticipated to be barely perceptible in the distance beyond. Representative of views from footpaths and properties on the western edge of Catcott



Photograph A3.3: Existing view from the Macmillan Way West long distance route at Cothelstone Hill within the Quantock Hills AONB looking northeast the F Route, route of the proposed 400kV overhead line and the site of the proposed Bridgwater Tee cable sealing end compound not perceptible due to the distance. The ZZ Route, VQ Route and ZG Route are not perceptible due to the distance with the existing Hinkley Point Power Station Complex barely perceptible to the north and Mendip Hills AONB just visible further in the view

A	22/03/2014	DCO SUBMISSION	JS	NH	NH
ISSUE	DATE	COMMENTS	DRAW	CHKD	APP'D

Title  
NATIONAL GRID (HINKLEY POINT C  
CONNECTION PROJECT)  
ENVIRONMENTAL STATEMENT  
VOLUME 5.7.3  
  
SECTION A: PHOTOGRAPHS OF EXISTING  
VIEWS BETWEEN 1 AND 3KM AND BEYOND 3KM

nationalgrid

National Grid plc, Warwick Technology Park, Gallows Hill, Warwick, CV34 6DA

NG INVESTMENT No.	APPLICATION No.		IN
20897	EN020001		A3
FIGURE No.	DRAWING No.	SCALE	
7.15.11	IN1979.24.011	NTS	
SHEET 11 OF 12			ISSUE
			A





Photograph A3.4: Existing view from the Samaritans Way South West long distance route running northeast of a minor road within the Quantock Hills AONB looking northeast with expansive distant views across the Levels towards Puriton Ridge and Brent Knoll, with the VQ Route and ZG Route just visible in the distance



Photograph A3.5: Existing view from PRow BW24/34 at Hill House west of Combwich, looking east across fields along the VQ Route and ZG Route overhead lines towards Puriton Ridge in the distance with the proposed route of the 400kV overhead line not visible. Representative of views from footpaths and properties west of Combwich



Photograph A3.6: Existing view from the River Parrett Trail long distance route north of Combwich, looking east across the River Parrett along the VQ Route and ZG Route overhead lines towards Puriton Ridge in the distance with the proposed route of the 400kV overhead line not visible. Representative of views from footpaths and properties near Combwich

A	22/03/2014	DCO SUBMISSION	JS	NH	NH
ISSUE	DATE	COMMENTS	DRAW	CHKD	APP'D

Title					
NATIONAL GRID (HINKLEY POINT C CONNECTION PROJECT)					
ENVIRONMENTAL STATEMENT					
VOLUME 5.7.3					
SECTION A: PHOTOGRAPHS OF EXISTING VIEWS BETWEEN 1 AND 3KM AND BEYOND 3KM					

nationalgrid			
National Grid plc, Warwick Technology Park, Gallows Hill, Warwick, CV34 6DA			
NG INVESTMENT No.	APPLICATION No.		IN
20897	EN020001		A3
FIGURE No.	DRAWING No.	SCALE	
7.15.12	IN1979.24.011	NTS	
SHEET 12 OF 12			ISSUE
			A



Figure 7.16 - Section B: Photographs of Existing Views between 1 and 3km and beyond 3km





Photograph B2.1 (and B2.S1a) Part 1: Existing view from Gold Corner Drove (also National Cycle Route 33 Stop Line Way) looking southwest towards the ZG Route and the F Route partly visible above hedgerow and trees and perceptible on Puriton Ridge. The view also looks towards the route of the proposed 400kV overhead line including on Puriton Ridge above hedgerow and trees



Photograph B2.1 (and B2.S1a) Part 2: Existing view from Gold Corner Drove (also National Cycle Route 33 Stop Line Way) looking west towards the F Route just visible above hedgerow and towards the route of the proposed 400kV overhead line



Photograph B2.2: Existing view from PRow BW13/26 running along Cripps River (south of Long Moor Drove) looking northwest towards the route of the proposed 400kV overhead line and towards the F Route partly in the distance visible above intervening hedgerow and trees

A	22/03/2014	DCO SUBMISSION	JS	NH	NH
ISSUE	DATE	COMMENTS	DRAW	CHKD	APP'D

Title  
NATIONAL GRID (HINKLEY POINT C CONNECTION PROJECT)  
ENVIRONMENTAL STATEMENT  
VOLUME 5.7.3  
  
SECTION B: PHOTOGRAPHS OF EXISTING VIEWS BETWEEN 1 AND 3KM AND BEYOND 3KM





Photograph B2.3: Existing view from River Road looking west towards the route of the proposed 400kV overhead line and towards the F Route perceptible in the distance above intervening hedgerow and trees partly screened by tall hedgerow in the foreground to the north



Photograph B2.4: Existing view from PRow AX23/8 along Coombe's Drove north of River House Farm looking northwest towards the route of the proposed 400kV overhead line and the F Route screened by intervening hedgerow and trees. Brent Knoll is visible in the distance



Photograph B2.5: Existing view from PRow AX23/1 between Grange Paddock and Yarrow Road on the southern edge of Mark (south of Mark Church) looking southwest and west towards the route of the proposed 400kV overhead line and the F Route screened by intervening hedgerows and trees

A	22/03/2014	DCO SUBMISSION	JS	NH	NH
ISSUE	DATE	COMMENTS	DRAW	CHKD	APP'D

Title  
NATIONAL GRID (HINKLEY POINT C  
CONNECTION PROJECT)  
ENVIRONMENTAL STATEMENT  
VOLUME 5.7.3

SECTION B: PHOTOGRAPHS OF EXISTING  
VIEWS BETWEEN 1 AND 3KM AND BEYOND 3KM

nationalgrid			
National Grid plc, Warwick Technology Park, Galloway Hill, Warwick, CV34 6DA			
NG INVESTMENT No.	APPLICATION No.		IN
20897	EN020001		A3
FIGURE No.	DRAWING No.	SCALE	
7.16.2	IN1979.24.013	NTS	
SHEET 2 OF 22			ISSUE
			A





Photograph B2.6: Existing view from the B3139 Blackford Road adjacent to Mark College sports pitches looking northwest towards the route of the proposed 400kV overhead line and the F Route screened by intervening hedgerows and trees



Photograph B2.7: Existing view from the B3139 Blackford Road near Lower Splott Farm looking southwest towards the route of the proposed 400kV overhead line and the F Route screened by intervening hedgerow and trees



Photograph B2.8: Existing view from Withy Grove on the bridge over the Huntspill River near the M5 motorway, looking east towards the low voltage Bridgwater to Weston-super-Mare overhead line and the F Route in the distance passing over the river with Glastonbury Tor visible beyond

A	22/03/2014	DCO SUBMISSION	JS	NH	NH
ISSUE	DATE	COMMENTS	DRAW	CHKD	APP'D

**Title**  
NATIONAL GRID (HINKLEY POINT C CONNECTION PROJECT)  
ENVIRONMENTAL STATEMENT  
VOLUME 5.7.3

SECTION B: PHOTOGRAPHS OF EXISTING VIEWS BETWEEN 1 AND 3KM AND BEYOND 3KM

<div><div><div>nationalgrid</div><div>National Grid plc, Warwick Technology Park, Galloway Hill, Warwick, CV34 6DA</div></div></div>				
NG INVESTMENT No.		APPLICATION No.		IN
20897		EN020001		A3
FIGURE No.		DRAWING No.		SCALE
7.16.3		IN1979.24.013		NTS
SHEET 3 OF 22				ISSUE
				A





Photograph B2.9: Existing view from Withy Road near Parsonage Farm looking south towards the ZG Route, the F Route and the route of the proposed 400kV overhead line largely screening by intervening hedgerow and trees



Photograph B2.10 (and B2.S1b) Part 1: Existing view from the B3139 Church Road (also National Cycle Route 33 Stop Line Way) in East Huntspill looking east towards the F Route and the route of the proposed 400kV overhead line screened by intervening hedgerows, trees and residential properties



Photograph B2.10 (and B2.S1b) Part 2 : Existing view from the B3139 Church Road (also National Cycle Route 33 Stop Line Way) in East Huntspill looking southeast towards the F Route and the route of the proposed 400kV overhead line screened from view by intervening hedgerows, trees and residential properties

A	22/03/2014	DCO SUBMISSION	JS	NH	NH
ISSUE	DATE	COMMENTS	DRAW	CHKD	APP'D

Title  
NATIONAL GRID (HINKLEY POINT C  
CONNECTION PROJECT)  
ENVIRONMENTAL STATEMENT  
VOLUME 5.7.3  
  
SECTION B: PHOTOGRAPHS OF EXISTING  
VIEWS BETWEEN 1 AND 3KM AND BEYOND 3KM

<div><div></div><div><div><div></div><div></div></div><div><div></div><div></div></div></div><div><div></div><div></div></div><div><div></div><div></div></div></div> <div><div></div><div></div></div> <div><div></div><div></div></div> <div><div></div><div></div></div> <div><div></div><div></div></div> <div><div></div><div></div></div> <div><div></div><div></div></div> <div><div></div><div></div></div> <div><div></div><div></div></div> <div><div></div><div></div></div> <div><div></div><div></div></div> <div><div></div><div></div></div> <div><div></div><div></div></div> <div><div></div><div></div></div> <div><div></div><div></div></div> <div><div></div><div></div></div> <div><div></div><div></div></div> <div><div></div><div></div></div> <div><div></div><div></div></div> <div><div></div><div></div></div> <div><div></div><div></div></div> <div><div></div><div></div></div> <div><div></div><div></div></div> <div><div></div><div></div></div> <div><div></div><div></div></div> <div><div></div><div></div></div> <div><div></div><div></div></div> <div><div></div><div></div></div> <div><div></div><div></div></div> <div><div></div><div></div></div> <div><div></div><div></div></div> <div><div></div><div></div></div> <div><div></div><div></div></div> <div><div></div><div></div></div> <div><div></div><div></div></div> <div><div></div><div></div></div> <div><div></div><div></div></div> <div><div></div><div></div></div> <div><div></div><div></div></div> <div><div></div><div></div></div> <div><div></div><div></div></div> <div><div></div><div></div></div> <div><div></div><div></div></div> <div><div></div><div></div></div> <div><div></div><div></div></div> <div><div></div><div></div></div> <div><div></div><div></div></div> <div><div></div><div></div></div> <div><div></div><div></div></div> <div><div></div><div></div></div> <div><div></div><div></div></div> <div><div></div><div></div></div> <div><div></div><div></div></div> <div><div></div><div></div></div> <div><div></div><div></div></div> <div><div></div><div></div></div> <div><div></div><div></div></div> <div><div></div><div></div></div> <div><div></div><div></div></div> <div><div></div><div></div></div> <div><div></div><div></div></div> <div><div></div><div></div></div> <div><div></div><div></div></div> <div><div></div><div></div></div> <div><div></div><div></div></div> <div><div></div><div></div></div> <div><div></div><div></div></div> <div><div></div><div></div></div> <div><div></div><div></div></div> <div><div></div><div></div></div> <div><div></div><div></div></div> <div><div></div><div></div></div> <div><div></div><div></div></div> <div><div></div><div></div></div> <div><div></div><div></div></div> <div><div></div><div></div></div> <div><div></div><div></div></div> <div><div></div><div></div></div> <div><div></div><div></div></div> <div><div></div><div></div></div> <div><div></div><div></div></div> <div><div></div><div></div></div> <div><div></div><div></div></div> <div><div></div><div></div></div> <div><div></div><div></div></div> <div><div></div><div></div></div> <div><div></div><div></div></div> <div><div></div><div></div></div> <div><div></div><div></div></div> <div><div></div><div></div></div> <div><div></div><div></div></div> <div><div></div><div></div></div> <div><div></div><div></div></div> <div><div></div><div></div></div> <div><div></div><div></div></div> <div><div></div><div></div></div> <div><div></div><div></div></div> <div><div></div><div></div></div> <div><div></div><div></div></div> <div><div></div><div></div></div> <div><div></div><div></div></div> <div><div></div><div></div></div> <div><div></div><div></div></div> <div><div></div><div></div></div> <div><div></div><div></div></div> <div><div></div><div></div></div> <div><div></div><div></div></div> <div><div></div><div></div></div> <div><div></div><div></div></div> <div><div></div><div></div></div> <div><div></div><div></div></div> <div><div></div><div></div></div> <div><div></div><div></div></div> <div><div></div><div></div></div> <div><div></div><div></div></div> <div><div></div><div></div></div> <div><div></div><div></div></div> <div><div></div><div></div></div> <div><div></div><div></div></div> <div><div></div><div></div></div> <div><div></div><div></div></div> <div><div></div><div></div></div> <div><div></div><div></div></div> <div><div></div><div></div></div> <div><div></div><div></div></div> <div><div></div><div></div></div> <div><div></div><div></div></div> <div><div></div><div></div></div> <div><div></div><div></div></div> <div><div></div><div></div></div> <div><div></div><div></div></div> <div><div></div><div></div></div> <div><div></div><div></div></div> <div><div></div><div></div></div> <div><div></div><div></div></div> <div><div></div><div></div></div> <div><div></div><div></div></div> <div><div></div><div></div></div> <div><div></div><div></div></div> <div><div></div><div></div></div> <div><div></div><div></div></div> <div><div></div><div></div></div> <div><div></div><div></div></div> <div><div></div><div></div></div> <div><div></div><div></div></div> <div><div></div><div></div></div> <div><div></div><div></div></div> <div><div></div><div></div></div> <div><div></div><div></div></div> <div><div></div><div></div></div> <div><div></div><div></div></div> <div><div></div><div></div></div> <div><div></div><div></div></div> <div><div></div><div></div></div> <div><div></div><div></div></div> <div><div></div><div></div></div> <div><div></div><div></div></div> <div><div></div><div></div></div> <div><div></div><div></div></div> <div><div></div><div></div></div> <div><div></div><div></div></div> <div><div></div><div></div></div> <div><div></div><div></div></div> <div><div></div><div></div></div> <div><div></div><div></div></div> <div><div></div><div></div></div> <div><div></div><div></div></div> <div><div></div><div></div></div> <div><div></div><div></div></div> <div><div></div><div></div></div> <div><div></div><div></div></div> <div><div></div><div></div></div> <div><div></div><div></div></div> <div><div></div><div></div></div> <div><div></div><div></div></div> <div><div></div><div></div></div> <div><div></div><div></div></div> <div><div></div><div></div></div> <div><div></div><div></div></div> <div><div></div><div></div></div> <div><div></div><div></div></div> <div><div></div><div></div></div> <div><div></div><div></div></div> <div><div></div><div></div></div> <div><div></div><div></div></div> <div><div></div><div></div></div> <div><div></div><div></div></div> <div><div></div><div></div></div> <div><div></div><div></div></div> <div><div></div><div></div></div> <div><div></div><div></div></div> <div><div></div><div></div></div> <div><div></div><div></div></div> <div><div></div><div></div></div> <div><div></div><div></div></div> <div><div></div><div></div></div> <div><div></div><div></div></div> <div><div></div><div></div></div> <div><div></div><div></div></div> <div><div></div><div></div></div> <div><div></div><div></div></div> <div><div></div><div></div></div> <div><div></div><div></div></div> <div><div></div><div></div></div> <div><div></div><div></div></div> <div><div></div><div></div></div> <div><div></div><div></div></div> <div><div></div><div></div></div> <div><div></div><div></div></div> <div><div></div><div></div></div> <div><div></div><div></div></div> <div><div></div><div></div></div> <div><div></div><div></div></div> <div><div></div><div></div></div> <div><div></div><div></div></div> <div><div></div><div></div></div> <div><div></div><div></div></div> <div><div></div><div></div></div> <div><div></div><div></div></div> <div><div></div><div></div></div> <div><div></div><div></div></div> <div><div></div><div></div></div> <div><div></div><div></div></div> <div><div></div><div></div></div> <div><div></div><div></div></div> <div><div></div><div></div></div> <div><div></div><div></div></div> <div><div></div><div></div></div> <div><div></div><div></div></div> <div><div></div><div></div></div> <div><div></div><div></div></div> <div><div></div><div></div></div> <div><div></div><div></div></div> <div><div></div><div></div></div> <div><div></div><div></div></div> <div><div></div><div></div></div> <div><div></div><div></div></div> <div><div></div><div></div></div> <div><div></div><div></div></div> <div><div></div><div></div></div> <div><div></div><div></div></div> <div><div></div><div></div></div> <div><div></div><div></div></div> <div><div></div><div></div></div> <div><div></div><div></div></div> <div><div></div><div></div></div> <div><div></div><div></div></div> <div><div></div><div></div></div> <div><div></div><div></div></div> <div><div></div><div></div></div> <div><div></div><div></div></div> <div><div></div><div></div></div> <div><div></div><div></div></div> <div><div></div><div></div></div> <div><div></div><div></div></div> <div><div></div><div></div></div> <div><div></div><div></div></div> <div><div></div><div></div></div> <div><div></div><div></div></div> <div><div></div><div></div></div> <div><div></div><div></div></div> <div><div></div><div></div></div> <div><div></div><div></div></div> <div><div></div><div></div></div> <div><div></div><div></div></div> <div><div></div><div></div></div> <div><div></div><div></div></div> <div><div></div><div></div></div> <div><div></div><div></div></div> <div><div></div><div></div></div> <div><div></div><div></div></div> <div><div></div><div></div></div> <div><div></div><div></div></div> <div><div></div><div></div></div> <div><div></div><div></div></div> <div><div></div><div></div></div> <div><div></div><div></div></div> <div><div></div><div></div></div> <div><div></div><div></div></div> <div><div></div><div></div></div> <div><div></div><div></div></div> <div><div></div><div></div></div> <div><div></div><div></div></div> <div><div></div><div></div></div> <div><div></div><div></div></div> <div><div></div><div></div></div> <div><div></div><div></div></div> <div><div></div><div></div></div> <div><div></div><div></div></div> <div><div></div><div></div></div> <div><div></div><div></div></div> <div><div></div><div></div></div> <div><div></div><div></div></div> <div><div></div><div></div></div> <div><div></div><div></div></div> <div><div></div><div></div></div> <div><div></div><div></div></div> <div><div></div><div></div></div> <div><div></div><div></div></div> <div><div></div><div></div></div> <div><div></div><div></div></div> <div><div></div><div></div></div> <div><div></div><div></div></div> <div><div></div><div></div></div> <div><div></div><div></div></div> <div><div></div><div></div></div> <div><div></div><div></div></div> <div><div></div><div></div></div> <div><div></div><div></div></div> <div><div></div><div></div></div> <div><div></div><div></div></div> <div><div></div><div></div></div> <div><div></div><div></div></div> <div><div></div><div></div></div> <div><div></div><div></div></div> <div><div></div><div></div></div> <div><div></div><div></div></div> <div><div></div><div></div></div> <div><div></div><div></div></div> <div><div></div><div></div></div> <div><div></div><div></div></div> <div><div></div><div></div></div> <div><div></div><div></div></div> <div><div></div><div></div></div> <div><div></div><div></div></div> <div><div></div><div></div></div> <div><div></div><div></div></div> <div><div></div><div></div></div> <div><div></div><div></div></div> <div><div></div><div></div></div> <div><div></div><div></div></div> <div><div></div><div></div></div> <div><div></div><div></div></div> <div><div></div><div></div></div> <div><div></div><div></div></div> <div><div></div><div></div></div> <div><div></div><div></div></div> <div><div></div><div></div></div> <div><div></div><div></div></div> <div><div></div><div></div></div> <div><div></div><div></div></div> <div><div></div><div></div></div> <div><div></div><div></div></div> <div><div></div><div></div></div> <div><div></div><div></div></div> <div><div></div><div></div></div> <div><div></div><div></div></div> <div><div></div><div></div></div> <div><div></div><div></div></div> <div><div></div><div></div></div> <div><div></div><div></div></div> <div><div></div><div></div></div> <div><div></div><div></div></div> <div><div></div><div></div></div> <div><div></div><div></div></div> <div><div></div><div></div></div> <div><div></div><div></div></div> <div><div></div><div></div></div> <div><div></div><div></div></div> <div><div></div><div></div></div> <div><div></div><div></div></div> <div><div></div><div></div></div> <div><div></div><div></div></div> <div><div></div><div></div></div> <div><div></div><div></div></div> <div><div></div><div></div></div> <div><div></div><div></div></div> <div><div></div><div></div></div> <div><div></div><div></div></div> <div><div></div><div></div></div> <div><div></div><div></div></div> <div><div></div><div></div></div> <div><div></div><div></div></div> <div><div></div><div></div></div> <div><div></div><div></div></div> <div><div></div><div></div></div> <div><div></div><div></div></div> <div><div></div><div></div></div> <div><div></div><div></div></div> <div><div></div><div></div></div> <div><div></div><div></div></div> <div><div></div><div></div></div> <div><div></div><div></div></div> <div><div></div><div></div></div> <div><div></div><div></div></div> <div><div></div><div></div></div> <div><div></div><div></div></div> <div><div></div><div></div></div> <div><div></div><div></div></div> <div><div></div><div></div></div> <div><div></div><div></div></div> <div><div></div><div></div></div> <div><div></div><div></div></div> <div><div></div><div></div></div> <div><div></div><div></div></div> <div><div></div><div></div></div> <div><div></div><div></div></div> <div><div></div><div></div></div> <div><div></div><div></div></div> <div><div></div><div></div></div> <div><div></div><div></div></div> <div><div></div><div></div></div> <div><div></div><div></div></div> <div><div></div><div></div></div> <div><div></div><div></div></div> <div><div>&lt;/</div></div>			
---	--	--	--





Photograph B2.11: Existing view from the B3139 Church Road between Chapel Lane and Merry Lane in East Huntspill looking east across fields towards the F Route and the route of the proposed 400kV overhead line visible above intervening field hedgerow and trees



Photograph B2.12: Existing view from PRow BW13/11 between New Road and Church Road, on the western edge of East Huntspill looking east towards the F Route and the route of the proposed 400kV overhead line glimpsed above beyond intervening residential properties and foreground trees



Photograph B2.13: Existing view from Westhill Lane, adjacent to Babbs Farm west of Watchfield, looking east towards the low voltage Bridgwater to Weston-super-Mare overhead line above intervening hedgerow, trees and property buildings, and towards the F Route and route of the proposed 400kV overhead line screened in the view

A	22/03/2014	DCO SUBMISSION	JS	NH	NH
ISSUE	DATE	COMMENTS	DRAW	CHKD	APP'D

Title  
NATIONAL GRID (HINKLEY POINT C CONNECTION PROJECT)  
ENVIRONMENTAL STATEMENT  
VOLUME 5.7.3  
  
SECTION B: PHOTOGRAPHS OF EXISTING VIEWS BETWEEN 1 AND 3KM AND BEYOND 3KM

nationalgrid			
National Grid plc, Warwick Technology Park, Galloway Hill, Warwick, CV34 6DA			
NG INVESTMENT No.	APPLICATION No.		IN
20897	EN020001		A3
FIGURE No.	DRAWING No.	SCALE	
7.16.5	IN1979.24.013	NTS	
SHEET 5 OF 22			ISSUE
			A





Photograph B2.14a: Existing view from the B3139 Church Road near properties in Watchfield, looking east and southeast across flat fields towards the low voltage Bridgwater to Weston-super-Mare overhead line, the F Route and the route of the proposed 400kV overhead line beyond, above intervening hedgerow and trees. The factory at East Huntspill features in the view southeast



Photograph B2.14b: Existing view from Southwick Road adjacent to Manor Farm looking southeast across farmland towards the F Route above intervening field boundary hedgerow and trees and towards the route of the proposed 400kV overhead line beyond



Photograph B2.15: Existing view from Dutch Road near Elm Tree Cottage looking east towards the low voltage Bridgwater to Weston-super-Mare overhead line and the F Route just perceptible and towards the route of the proposed 400kV overhead line above intervening hedgerow and trees

A	22/03/2014	DCO SUBMISSION	JS	NH	NH
ISSUE	DATE	COMMENTS	DRAW	CHKD	APP'D

Title  
NATIONAL GRID (HINKLEY POINT C  
CONNECTION PROJECT)  
ENVIRONMENTAL STATEMENT  
VOLUME 5.7.3

SECTION B: PHOTOGRAPHS OF EXISTING  
VIEWS BETWEEN 1 AND 3KM AND BEYOND 3KM

nationalgrid			National Grid plc, Warwick Technology Park, Galloway Hill, Warwick, CV34 6DA		
NG INVESTMENT No.	APPLICATION No.		IN		
20897	EN020001		A3		
FIGURE No.	DRAWING No.		SCALE		
7.16.6	IN1979.24.013		NTS		
SHEET 6 OF 22			ISSUE		
			A		





Photograph B2.16: Existing view from Burnham Moor Lane looking east towards the low voltage Bridgwater to Weston-super-Mare overhead line just visible above intervening hedgerow and trees, and towards the F Route and route of the proposed 400kV overhead line beyond



Photograph B2.17: Existing view from Harp Road adjacent to Poplar Farm near Northwick looking east towards the low voltage Bridgwater to Weston-super-Mare overhead line just visible above hedgerow and trees and towards the F Route and the route of the proposed 400kV overhead line beyond



Photograph B2.18: Existing view from the car parl at the Battleborough Grange Hotel looking east towards the low voltage Bridgwater to Weston-super-Mare overhead line, the F Route and the route of the proposed 400kV overhead line beyond above intervening hedgerow and trees

A	22/03/2014	DCO SUBMISSION	JS	NH	NH
ISSUE	DATE	COMMENTS	DRAW	CHKD	APP'D

Title  
NATIONAL GRID (HINKLEY POINT C  
CONNECTION PROJECT)  
ENVIRONMENTAL STATEMENT  
VOLUME 5.7.3

SECTION B: PHOTOGRAPHS OF EXISTING  
VIEWS BETWEEN 1 AND 3KM AND BEYOND 3KM

nationalgrid			
National Grid plc, Warwick Technology Park, Galloway Hill, Warwick, CV34 6DA			
NG INVESTMENT No.	APPLICATION No.		IN
20897	EN020001		A3
FIGURE No.	DRAWING No.	SCALE	
7.16.7	IN1979.24.013	NTS	
SHEET 7 OF 22			ISSUE
			A





Photograph B2.19a: Existing view from the A38 Bristol Road over the M5 motorway looking southeast and south across flat farmland beyond the M5, towards the route of the proposed 400kV overhead line and the F Route above intervening hedgerow, trees and individual properties



Photograph B2.19b: Existing view from the A38 Bristol Road over the M5 motorway looking north and northeast across flat farmland beyond the M5, towards the route of the proposed 400kV overhead line and the F Route with the Mendip Hills beyond



Photograph B2.20: Existing view from a road south of the A38 on the western edge of Rooksbridge looking northeast to south towards the F Route and the route of the proposed 400kV overhead line above intervening reeds, hedgerow and trees

A	22/03/2014	DCO SUBMISSION	JS	NH	NH
ISSUE	DATE	COMMENTS	DRAW	CHKD	APP'D

Title

NATIONAL GRID (HINKLEY POINT C CONNECTION PROJECT)  
ENVIRONMENTAL STATEMENT  
VOLUME 5.7.3

SECTION B: PHOTOGRAPHS OF EXISTING VIEWS BETWEEN 1 AND 3KM AND BEYOND 3KM

nationalgrid

National Grid plc, Warwick Technology Park, Gallows Hill, Warwick, CV34 6DA

NG INVESTMENT No.	APPLICATION No.		IN
20897	EN020001		A3
FIGURE No.	DRAWING No.	SCALE	
7.16.8	IN1979.24.013	NTS	
SHEET 8 OF 22			ISSUE
			A





Photograph B2.21: Existing view from PRow AX17/24 southwest of a property named Lake House (west of the M5 motorway) looking east towards the low voltage Bridgwater to Weston-super-Mare overhead line, and towards the F Route and the oute of the proposed 400kV overhead line screened from by intervening hedgerow and trees



Photograph B2.22: Existing view from Old Bristol Road looking northeast towards the low voltage Bridgwater to Weston-super-Mare overhead line, and towards the F Route and the route of the proposed 400kV overhead line screened by intervening hedgerow and trees including those surrounding the M5 motorway services



Photograph B2.23: Existing view from White House Lane adjacent to the northern end of PRow AX17/7 (north of Edingworth) looking northeast to southeast towards the F Route visible above intervening hedgerow and trees and backgrounded by the Mendip Hills, and towards the route of the proposed 400kV overhead line and the site of the proposed CSE compound beyond the M5 motorway

A	22/03/2014	DCO SUBMISSION	JS	NH	NH
ISSUE	DATE	COMMENTS	DRAW	CHKD	APPD

Title  
NATIONAL GRID (HINKLEY POINT C  
CONNECTION PROJECT)  
ENVIRONMENTAL STATEMENT  
VOLUME 5.7.3

SECTION B: PHOTOGRAPHS OF EXISTING  
VIEWS BETWEEN 1 AND 3KM AND BEYOND 3KM

nationalgrid			
National Grid plc, Warwick Technology Park, Galloway Hill, Warwick, CV34 6DA			
NG INVESTMENT No.	APPLICATION No.		IN
20897	EN020001		A3
FIGURE No.	DRAWING No.	SCALE	
7.16.9	IN1979.24.013	NTS	
SHEET 9 OF 22			ISSUE
			A





Photograph B2.24: Existing view from PRow AX22/8 east and southeast of Eastertown looking east towards the F Route, the route of the proposed 400kV overhead line and the site of the proposed CSE compound screened by intervening hedgerow and trees



Photograph B2.25: Existing view from the Mendip Hills Wild Walk 3 (Bleadon Hill) published route (also PRow AX6/12) on the southern edge of Shiplate looking southeast towards the site of the proposed CSE compound and the route of the proposed 400kV overhead line screened by intervening hedgerow and trees



Photograph B2.26: Existing view from PRow AX12/33 on Drove Way between Kingsway and Perry Road looking northwest across Binham Moor towards the route of the proposed 400kV overhead line and the F Route just visible in the distance above intervening hedgerow and trees, with Brent Knoll and the Mendip Hills beyond

A	22/03/2014	DCO SUBMISSION	JS	NH	NH
ISSUE	DATE	COMMENTS	DRAW	CHKD	APP'D

Title  
NATIONAL GRID (HINKLEY POINT C CONNECTION PROJECT)  
ENVIRONMENTAL STATEMENT  
VOLUME 5.7.3  
  
SECTION B: PHOTOGRAPHS OF EXISTING VIEWS BETWEEN 1 AND 3KM AND BEYOND 3KM

<div><div><div>nationalgrid</div><div>National Grid plc, Warwick Technology Park, Galloway Hill, Warwick, CV34 6DA</div></div></div>			
NG INVESTMENT No.	APPLICATION No.		IN
20897	EN020001		A3
FIGURE No.	DRAWING No.	SCALE	
7.16.10	IN1979.24.013	NTS	
SHEET 10 OF 22			ISSUE
			A





Photograph B2.27: Existing view from PRow AX12/1 on Allerton Moor looking west towards the F Route just visible in the distance above intervening hedgerows and trees with the Mendip Hills visible in the distance, and towards the route of the proposed 400kV overhead line



Photograph B2.28: Existing view from Quarrylands Lane north of properties on the northern edge of Stone Allerton looking west and northwest towards the F Route and the route of the proposed 400kV overhead line screened by intervening trees. The Mendip Hills are visible to the northwest



Photograph B2.29: Existing view from Quarrylands Lane north of Stone Allerton (between Homestead Farm and Long Acre) looking west across fields towards the F Route just visible above trees in the distance, with Brent Knoll beyond and to towards the route of the proposed 400kV overhead line

A	22/03/2014	DCO SUBMISSION	JS	NH	NH
ISSUE	DATE	COMMENTS	DRAW	CHKD	APP'D

Title  
NATIONAL GRID (HINKLEY POINT C  
CONNECTION PROJECT)  
ENVIRONMENTAL STATEMENT  
VOLUME 5.7.3

SECTION B: PHOTOGRAPHS OF EXISTING  
VIEWS BETWEEN 1 AND 3KM AND BEYOND 3KM

<div><div>nationalgrid</div><div>National Grid plc, Warwick Technology Park, Galloway Hill, Warwick, CV34 6DA</div></div>			
NG INVESTMENT No.	APPLICATION No.		IN
20897	EN020001		A3
FIGURE No.	DRAWING No.	SCALE	
7.16.11	IN1979.24.013	NTS	
SHEET 11 OF 22			ISSUE
			A





Photograph B2.30: Existing view from PRow AX26/7 west of Badgworth Court looking west and northwest towards the route of the proposed 400kV overhead line and the F Route running across the Somerset Levels and Moors between and above intervening hedgerow and trees with Brent Knoll visible beyond



Photograph B2.31a: Existing view from Badgworth Church looking west towards the F Route and the route of the proposed 400kV overhead line partially visible above and between intervening trees and hedgerow, with some backgrounding by Brent Knoll beyond




Photograph B2.31b: Existing view from Church Lane near St Congar’s Barn, Badgworth looking northwest towards Loxton Gap in the Mendip Hills AONB, and towards the F Route just visible above trees in the distance and towards the route of the proposed 400kV overhead line and the site of the proposed CSE compound

A	22/03/2014	DCO SUBMISSION	JS	NH	NH
ISSUE	DATE	COMMENTS	DRAW	CHKD	APP'D

**Title**  
NATIONAL GRID (HINKLEY POINT C CONNECTION PROJECT)  
ENVIRONMENTAL STATEMENT  
VOLUME 5.7.3

SECTION B: PHOTOGRAPHS OF EXISTING VIEWS BETWEEN 1 AND 3KM AND BEYOND 3KM

<div><div></div><div>National Grid plc, Warwick Technology Park, Galloway Hill, Warwick, CV34 6DA</div></div>			
NG INVESTMENT No.	APPLICATION No.		IN
20897	EN020001		A3
FIGURE No.	DRAWING No.	SCALE	
7.16.12	IN1979.24.013	NTS	
SHEET 12 OF 22			ISSUE
			A





Photograph B2.32: Existing view from a layby on the A38 Bristol Road near Badgworth Bow Farm looking northwest towards the F Route screened by intervening trees and hedgerows and towards the route of the proposed 400kV overhead line and the site of the proposed CSE compound. Loxton Gap and the Mendip Hills are visible beyond



Photograph B2.33: Existing view from PRow AX26/15 north of the A38 Bristol Road at Lower Weare looking northwest towards Crooks Peak in the Mendip Hills AONB and towards the F Route, the route of the proposed 400kV overhead line and the site of the proposed CSE compound screened from view by intervening hedgerows and trees



Photograph B2.34: Existing view from PRow AX15/3 west of Cross looking west towards the F Route, the route of the proposed 400kV overhead line and the site of the proposed CSE compound screened by intervening field boundary hedgerow and trees

A	22/03/2014	DCO SUBMISSION	JS	NH	NH
ISSUE	DATE	COMMENTS	DRAW	CHKD	APP'D

Title  
NATIONAL GRID (HINKLEY POINT C  
CONNECTION PROJECT)  
ENVIRONMENTAL STATEMENT  
VOLUME 5.7.3

SECTION B: PHOTOGRAPHS OF EXISTING  
VIEWS BETWEEN 1 AND 3KM AND BEYOND 3KM

<div><div>nationalgrid</div><div>National Grid plc, Warwick Technology Park, Gallows Hill, Warwick, CV34 6DA</div></div>			
NG INVESTMENT No.	APPLICATION No.		IN
20897	EN020001		A3
FIGURE No.	DRAWING No.	SCALE	
7.16.13	IN1979.24.013	NTS	
SHEET 13 OF 22			ISSUE
			A





Photograph B2.35: Existing view from the car park viewpoint on Webbington Road (opposite the start of PRow AX15/4 that leads to Crooks Peak) looking southwest and south across the Somerset Levels and Moors towards the F Route partly visible above trees and towards the route of the proposed 400kV overhead line. The view extends south towards Puriton Ridge in the distance

A	22/03/2014	DCO SUBMISSION	JS	NH	NH
ISSUE	DATE	COMMENTS	DRAW	CHK'D	APP'D
<div>Title</div> <div>NATIONAL GRID (HINKLEY POINT C CONNECTION PROJECT) ENVIRONMENTAL STATEMENT VOLUME 5.7.3</div> <div>SECTION B: PHOTOGRAPHS OF EXISTING VIEWS BETWEEN 1 AND 3KM AND BEYOND 3KM</div>					
<div><div>nationalgrid</div><div>National Grid plc, Warwick Technology Park, Gallows Hill, Warwick, CV34 6DA</div></div>					
NG INVESTMENT No.	APPLICATION No.			IN	
20897	EN020001			A3	
FIGURE No.	DRAWING No.			SCALE	
7.16.14	IN1979.24.013			NTS	
SHEET 14 OF 22				ISSUE	
				A	





Photograph B3.1: Existing view from PRow BW27/10 on Pawlett Hill between Gaunts Road and Chapel Road looking east towards the ZG Route visible above buildings and trees, and towards the route of the proposed 400kV overhead line



Photograph B3.2 Part 1: Existing view from the A38 Pawlett Road at the junction with Manor Road on the eastern edge of Pawlett looking east towards the ZG Route and the route of the proposed 400kV overhead lines beyond



Photograph B3.2 Part 2: Existing view from the A38 Pawlett Road at the junction with Manor Road on the eastern edge of Pawlett looking southeast towards the ZG Route, and the route of the proposed 400kV overhead line beyond

A	22/03/2014	DCO SUBMISSION	JS	NH	NH
ISSUE	DATE	COMMENTS	DRAW	CHK'D	APP'D
<div>Title</div> <div>NATIONAL GRID (HINKLEY POINT C CONNECTION PROJECT) ENVIRONMENTAL STATEMENT VOLUME 5.7.3</div> <div>SECTION B: PHOTOGRAPHS OF EXISTING VIEWS BETWEEN 1 AND 3KM AND BEYOND 3KM</div>					
<div><div>nationalgrid</div><div>National Grid plc, Warwick Technology Park, Gallowes Hill, Warwick, CV34 6DA</div></div>					
NG INVESTMENT No.	APPLICATION No.			IN	
20897	EN020001			A3	
FIGURE No.	DRAWING No.	IN1979.24.013		SCALE	
7.16.15				NTS	
SHEET 15 OF 22				ISSUE	
				A	





Photograph B3.3: Existing view from PRow BW35/9 between the A38 Huntspill Road and New Road to the south of Highbridge looking east towards the F Route (indistinguishable in the view) and towards the route of the proposed 400kV overhead line



Photograph B3.4: Existing view from Isleport Lane near Bluebell Cottage on the eastern edge of Highbridge looking east towards the F Route screened by intervening hedgerow and trees and towards the route of the proposed 400kV overhead line



Photograph B3.5: Existing view from a footpath (east of PRow AX17/16) on the top of Brent Knoll looking northeast and east towards the F Route and the route of the proposed 400kV overhead line across the Somerset Levels and Moors, and towards the site of the proposed CSE compound to the northeast, with the Mendip Hills beyond

A	22/03/2014	DCO SUBMISSION	JS	NH	NH
ISSUE	DATE	COMMENTS	DRAW	CHK'D	APP'D
<div>Title</div> <div>NATIONAL GRID (HINKLEY POINT C CONNECTION PROJECT) ENVIRONMENTAL STATEMENT VOLUME 5.7.3</div> <div>SECTION B: PHOTOGRAPHS OF EXISTING VIEWS BETWEEN 1 AND 3KM AND BEYOND 3KM</div>					
<div><div><div>nationalgrid</div><div>National Grid plc, Warwick Technology Park, Gallows Hill, Warwick, CV34 6DA</div></div></div>					
NG INVESTMENT No.	APPLICATION No.		IN		
20897	EN020001		A3		
FIGURE No.	DRAWING No.	SCALE		NTS	
7.16.16	IN1979.24.013				
SHEET 16 OF 22			ISSUE		
			A		





Photograph B3.6: Existing view from PRow AX17/4 on the northern slopes of Brent Knoll looking northeast towards the F Route (indistinguishable in the view) and towards the route of the proposed 400kV overhead line



Photograph B3.7: Existing view from the Church and a cemetery on Brent Road in Berrow looking east towards the F Route indistinguishable in the view and towards the route of the proposed 400kV overhead line



Photograph B3.8: Existing view from Grass Road in Brean looking east towards the F Route indistinguishable in the view and towards the route of the proposed 400kV overhead line

A	22/03/2014	DCO SUBMISSION	JS	NH	NH
ISSUE	DATE	COMMENTS	DRAW	CHK'D	APP'D
<div>Title</div> <div>NATIONAL GRID (HINKLEY POINT C CONNECTION PROJECT) ENVIRONMENTAL STATEMENT VOLUME 5.7.3</div> <div>SECTION B: PHOTOGRAPHS OF EXISTING VIEWS BETWEEN 1 AND 3KM AND BEYOND 3KM</div>					
<div><div><div>nationalgrid</div></div><div>National Grid plc, Warwick Technology Park, Galloway Hill, Warwick, CV34 6DA</div></div>					
NG INVESTMENT No.	APPLICATION No.		IN		
20897	EN020001		A3		
FIGURE No.	DRAWING No.			SCALE	
7.16.17	IN1979.24.013			NTS	
SHEET 17 OF 22			ISSUE		
			A		





Photograph B3.9a: Existing view from PRow AX7/16 on top of the cliff at Brean Down, leading up from Brean Down Bird Garden looking towards the F Route (indistinguishable in the view) and towards the route of the proposed 400kV overhead line



Photograph B3.9b: Existing view from a car park at Brean Down, looking east towards the low voltage Bridgwater to Weston-super-Mare overhead line and towards the F Route route of the route of the proposed 400kV overhead line in the far distance



Photograph B3.10: Existing view from the PRow parallel to the A38 Cross Lane on the western edge of Axbridge (including Tarnsend Farm) orientated southwest and properties on Howlgate Way on the western edge of Axbridge Road looking west towards the F Route, the route of the proposed 400kV overhead line and towards the site of the proposed CSE compound all indistinguishable in the view

A	22/03/2014	DCO SUBMISSION	JS	NH	NH
ISSUE	DATE	COMMENTS	DRAW	CHKD	APP'D

Title  
NATIONAL GRID (HINKLEY POINT C  
CONNECTION PROJECT)  
ENVIRONMENTAL STATEMENT  
VOLUME 5.7.3

SECTION B: PHOTOGRAPHS OF EXISTING  
VIEWS BETWEEN 1 AND 3KM AND BEYOND 3KM





Photograph B3.11: Existing view from PRow AX1/3 around Cheddar Reservoir looking west across the Somerset Levels and Moors south of the Mendip Hills AONB towards the F Route and the route of the proposed 400kV overhead line in the distance



Photograph B3.12: Existing view from PRow AX26/9 on elevated ground west of Notting Hill Way looking west towards the F Route and the route of the proposed 400kV overhead line on the low lying Somerset Levels and Moors visible above hedgerows and trees



Photograph B3.13a: Existing view from Notting Hill Way at the junction with Dunkerry Road looking west towards the F Route and the route of the proposed 400kV overhead line screened by roadside hedgerow. Upper storey property views are anticipated west towards the distant F Route with Brent Knoll beyond

A	22/03/2014	DCO SUBMISSION	JS	NH	NH
ISSUE	DATE	COMMENTS	DRAW	CHKD	APP'D

Title  
NATIONAL GRID (HINKLEY POINT C  
CONNECTION PROJECT)  
ENVIRONMENTAL STATEMENT  
VOLUME 5.7.3

SECTION B: PHOTOGRAPHS OF EXISTING  
VIEWS BETWEEN 1 AND 3KM AND BEYOND 3KM





Photograph B3.13b: Existing view from PRow AX26/3 on elevated ground west of Notting Hill Way looking west towards the F Route and the route of the proposed 400kV overhead line on the lower lying Somerset Levels and Moors perceptible above trees



Photograph B3.14: Existing view from PRow AX12/3 between New Road and Rectory Hill looking southwest towards the F Route and the route of the proposed 400kV overhead line partially screened by hedgerows in the foreground and indistinguishable in the view due to the distance



Photograph B3.15: Existing view from PRow AX27/77 north of Blackford looking west towards the F Route and the route of the proposed 400kV overhead line are indistinguishable. Brent Knoll is visible beyond

A	22/03/2014	DCO SUBMISSION	JS	NH	NH
ISSUE	DATE	COMMENTS	DRAW	CHK'D	APP'D
<div>Title</div> <div>NATIONAL GRID (HINKLEY POINT C CONNECTION PROJECT) ENVIRONMENTAL STATEMENT VOLUME 5.7.3</div> <div>SECTION B: PHOTOGRAPHS OF EXISTING VIEWS BETWEEN 1 AND 3KM AND BEYOND 3KM</div>					
<div><div><div>nationalgrid</div><div>National Grid plc, Warwick Technology Park, Gallows Hill, Warwick, CV34 6DA</div></div></div>					
NG INVESTMENT No.	APPLICATION No.		IN		
20897	EN020001		A3		
FIGURE No.	DRAWING No.			SCALE	
7.16.20	IN1979.24.013			NTS	
SHEET 20 OF 22			ISSUE		
			A		





Photograph B3.16: Existing view from Quab Lane, northwest of Wedmore looking west towards the F Route on Puriton Ridge and running across Somerset Levels and Moors and towards the route of the proposed 400kV overhead line indistinguishable. Brent Knoll is visible beyond



Photograph B3.17: Existing view from Deer Leap picnic area (also National Cycle Route 3) east of Westbury-sub-Mendip looking west towards the F Route and the route of the proposed 400kV overhead line indistinguishable in the distant panaromic view



Photograph B3.18: Existing view from Glastonbury Tor looking west and northwest across lower lying ground towards the F Route and the route of the proposed 400kV overhead line indistinguishable in the distant panaromic view

A	22/03/2014	DCO SUBMISSION	JS	NH	NH
ISSUE	DATE	COMMENTS	DRAW	CHK'D	APP'D
<div>Title</div> <div>NATIONAL GRID (HINKLEY POINT C CONNECTION PROJECT) ENVIRONMENTAL STATEMENT VOLUME 5.7.3</div> <div>SECTION B: PHOTOGRAPHS OF EXISTING VIEWS BETWEEN 1 AND 3KM AND BEYOND 3KM</div>					
<div><div>nationalgrid</div><div>National Grid plc, Warwick Technology Park, Gallowes Hill, Warwick, CV34 6DA</div></div>					
NG INVESTMENT No.	APPLICATION No.		IN		
20897	EN020001		A3		
FIGURE No.	DRAWING No.			SCALE	
7.16.21	IN1979.24.013			NTS	
SHEET 21 OF 22				ISSUE	
				A	





Photograph B3.19: Existing view from Steart Point looking east across the Somerset Levels and Moors towards the F Route and the route of the proposed 400kV overhead line beyond indistinguishable in the distant view. The ZG Route and the low voltage Bridgwater to Weston-super-Mare overhead line are partly visible closer in the view

A	22/03/2014	DCO SUBMISSION	JS	NH	NH
ISSUE	DATE	COMMENTS	DRAW	CHK'D	APP'D
<div>Title</div> <div>NATIONAL GRID (HINKLEY POINT C CONNECTION PROJECT) ENVIRONMENTAL STATEMENT VOLUME 5.7.3</div> <div>SECTION B: PHOTOGRAPHS OF EXISTING VIEWS BETWEEN 1 AND 3KM AND BEYOND 3KM</div>					
<div><div>nationalgrid</div><div>National Grid plc, Warwick Technology Park, Galloway Hill, Warwick, CV34 6DA</div></div>					
NG INVESTMENT No.		APPLICATION No.		IN A3	
20897		EN020001			
FIGURE No.		DRAWING No.		SCALE	
7.16.22		IN1979.24.013		NTS	
SHEET 22 OF 22				ISSUE A	



Figure 7.17 - Section C: Photographs of Existing Views between 1 and 3km and beyond 3km





Photograph C2.1a: Existing view from PRow AX15/9 running southeast northwest along the lower slopes of Wavering Down between Compton Bishop and Cross looking southwest towards the F Route and the route of the proposed 400kV overhead line in the distance across the Somerset Levels and Moors in Section B. The F Route is indistinguishable due to distance and screening by landform and trees in Section C and hedgerow and trees in Section B



Photograph C2.1b: Existing view from PRow AX15/9 running southeast northwest along the lower slopes of Wavering Down between Compton Bishop and Cross looking southwest towards the F Route and the route of the proposed 400kV overhead line across the Somerset Levels and Moors in Section B. The F Route is screened by landform and trees in Section C and indistinguishable in Section B due to distance and screening by hedgerows and trees on the Somerset Levels and Moors



Photograph C2.2 & C2.S1o: Existing view from the West Mendip Way long distance route (also PRow AX15/19) running east west along the ridge of Wavering Down looking southwest towards the F Route and the route of the proposed 400kV overhead line on lower ground across the Somerset Levels and Moors in Section B. The F Route in the northern part of Section B is just perceptible in a small part of the elevated, panoramic and long distance view

A	22/03/2014	DCO SUBMISSION	JS	NH	NH
ISSUE	DATE	COMMENTS	DRAW	CHK'D	APP'D
<div>Title</div> <div>NATIONAL GRID (HINKLEY POINT C CONNECTION PROJECT) ENVIRONMENTAL STATEMENT VOLUME 5.7.3</div> <div>SECTION C: PHOTOGRAPHS OF EXISTING VIEWS BETWEEN 1 AND 3KM AND BEYOND 3KM</div>					
<div><div>nationalgrid</div><div>National Grid plc, Warwick Technology Park, Gallows Hill, Warwick, CV34 6DA</div></div>					
NG INVESTMENT No.	APPLICATION No.		IN		
20897	EN020001		A3		
FIGURE No.	DRAWING No.	SCALE		NTS	
7.17.1	IN1979.24.014				
SHEET 1 OF 8			ISSUE		
			A		





Photograph C2.3: Existing view from the Churchyard and PRoW AX29/21 at St James the Great Church, Winscombe looking northwest towards the F Route in the northern part of Section C backgrounded by high ground beyond and visible above trees in places; and towards the route of the proposed 400kV underground cables partly screened and filtered by valley trees



Photograph C2.4: Existing view from Barton Road west of Winscombe (near 'Horsleigh House'), looking northwest and north towards the F Route and the route of the proposed 400kV underground cable screened by intervening hedgerows and trees



Photograph C2.5: Existing view from PRoW AX29/26 running west of Winscombe looking northeast north towards the F Route and the route of the proposed 400kV underground cables running through the valley in the distance including between Banwell Wood and Sandford Hill, filtered in the view by intervening hedgerows and mature trees

A	22/03/2014	DCO SUBMISSION	JS	NH	NH
ISSUE	DATE	COMMENTS	DRAW	CHKD	APP'D

Title					
NATIONAL GRID (HINKLEY POINT C CONNECTION PROJECT)					
ENVIRONMENTAL STATEMENT					
VOLUME 5.7.3					
SECTION C: PHOTOGRAPHS OF EXISTING VIEWS BETWEEN 1 AND 3KM AND BEYOND 3KM					

nationalgrid			
National Grid plc, Warwick Technology Park, Gallows Hill, Warwick, CV34 6DA			
NG INVESTMENT No.	APPLICATION No.		IN
20897	EN020001		A3
FIGURE No.	DRAWING No.	SCALE	
7.17.2	IN1979.24.014	NTS	
SHEET 2 OF 8			ISSUE
			A





Photograph C2.6: Existing view from PRow AX29/17 looking northwest towards the F Route barely perceptible against the wooded backdrop of Banwell Wood, and towards the route of the proposed 400kV underground cables screened by intervening landform and buildings



Photograph C2.7: Existing view from PRow AX29/15 running southwest of Mooseheart between Knapps Drive and Banwell Road looking west and northwest towards the F Route barely perceptible due to distance and intervening trees, hedgerow and buildings, and towards the route of the proposed 400kV underground cables screened by intervening trees, hedgerow and buildings



Photograph C2.8: Existing view from the northern edge of Woodborough at Winscombe (near Paddingham House) looking northwest beyond Winscombe and Sandford Batch towards the F Route partly visible backgrounded by valley trees and higher ground, and running north between Banwell Hill and Sandford Hill; as well as towards the route of the proposed 400kV underground cables predominantly screened by intervening trees

A	22/03/2014	DCO SUBMISSION	JS	NH	NH
ISSUE	DATE	COMMENTS	DRAW	CHKD	APP'D

Title					
NATIONAL GRID (HINKLEY POINT C CONNECTION PROJECT)					
ENVIRONMENTAL STATEMENT					
VOLUME 5.7.3					
SECTION C: PHOTOGRAPHS OF EXISTING VIEWS BETWEEN 1 AND 3KM AND BEYOND 3KM					

nationalgrid			
National Grid plc, Warwick Technology Park, Gallowes Hill, Warwick, CV34 6DA			
NG INVESTMENT No.	APPLICATION No.		IN
20897	EN020001		A3
FIGURE No.	DRAWING No.	SCALE	
7.17.3	IN1979.24.014	NTS	
SHEET 3 OF 8			ISSUE
			A





Photograph C2.9: Existing view from Pylewell Lane looking west towards the F Route and the route of the proposed 400kV underground cables in the distance screened by intervening hedgerows and trees



Photograph C2.10: Existing view from PRow AX25/26 running north south on the northwestern edge of Shipham near residential properties on the western edge of Shipham looking northwest towards the F Route and the route of the proposed 400kV underground screened by intervening hedgerows and trees



Photograph C2.11: Existing view from PRow AX14/19 running roughly north south on the northern slopes of Sandford Hill looking northwest and north towards the N Route, F Route and the AT Route and towards the route of the proposed 400kV overhead line across the landscape in Section D. Existing 132kV steel lattice pylons are just distinguishable in a small part of the view above trees and backgrounded by the Somerset Moors

A	22/03/2014	DCO SUBMISSION	JS	NH	NH
ISSUE	DATE	COMMENTS	DRAW	CHKD	APP'D

Title					
NATIONAL GRID (HINKLEY POINT C CONNECTION PROJECT)					
ENVIRONMENTAL STATEMENT					
VOLUME 5.7.3					
SECTION C: PHOTOGRAPHS OF EXISTING VIEWS BETWEEN 1 AND 3KM AND BEYOND 3KM					

nationalgrid			
National Grid plc, Warwick Technology Park, Galloway Hill, Warwick, CV34 6DA			
NG INVESTMENT No.	APPLICATION No.		IN
20897	EN020001		A3
FIGURE No.	DRAWING No.	SCALE	
7.17.4	IN1979.24.014	NTS	
SHEET 4 OF 8			ISSUE
			A





Photograph C2.12: Existing view from Sidcot Hill Farm accessed via Sidcot looking northwest towards the F Route backgrounded by the hillside and towards the route of the proposed 400kV underground cables partially screened by valley trees and hedgerow



Photograph C2.13a: Existing view from a footpath through woodland on Banwell Hill looking northeast towards the site of the proposed Sandford Substation and towards the route of the proposed 400kV overhead line and 132kV overhead line in Section D. The F Route and the AT Route are not distinguishable in the filtered distant view



Photograph C2.13b: Existing view from a footpath through woodland on Banwell Hill towards Banwell Tower enclosed by woodland trees



Photograph C2.13c: Existing view from a footpath through woodland near Banwell Tower with views towards the Lox Yeo Valley in Section C heavily filtered and screened by surrounding woodland trees

A	22/03/2014	DCO SUBMISSION	JS	NH	NH
ISSUE	DATE	COMMENTS	DRAW	CHKD	APP'D

<b>Title</b> NATIONAL GRID (HINKLEY POINT C CONNECTION PROJECT) ENVIRONMENTAL STATEMENT VOLUME 5.7.3  SECTION C: PHOTOGRAPHS OF EXISTING VIEWS BETWEEN 1 AND 3KM AND BEYOND 3KM					
--	--	--	--	--	--

<div><div></div><div><div><div></div><div></div></div><div><div></div><div></div></div></div><div><div></div><div></div></div><div><div></div><div></div></div></div> <div><div></div><div></div></div> <div><div></div><div></div></div> <div><div></div><div></div></div> <div><div></div><div></div></div> <div><div></div><div></div></div> <div><div></div><div></div></div> <div><div></div><div></div></div> <div><div></div><div></div></div> <div><div></div><div></div></div> <div><div></div><div></div></div> <div><div></div><div></div></div> <div><div></div><div></div></div> <div><div></div><div></div></div> <div><div></div><div></div></div> <div><div></div><div></div></div> <div><div></div><div></div></div> <div><div></div><div></div></div> <div><div></div><div></div></div> <div><div></div><div></div></div> <div><div></div><div></div></div> <div><div></div><div></div></div> <div><div></div><div></div></div> <div><div></div><div></div></div> <div><div></div><div></div></div> <div><div></div><div></div></div> <div><div></div><div></div></div> <div><div></div><div></div></div> <div><div></div><div></div></div> <div><div></div><div></div></div> <div><div></div><div></div></div> <div><div></div><div></div></div> <div><div></div><div></div></div> <div><div></div><div></div></div> <div><div></div><div></div></div> <div><div></div><div></div></div> <div><div></div><div></div></div> <div><div></div><div></div></div> <div><div></div><div></div></div> <div><div></div><div></div></div> <div><div></div><div></div></div> <div><div></div><div></div></div> <div><div></div><div></div></div> <div><div></div><div></div></div> <div><div></div><div></div></div> <div><div></div><div></div></div> <div><div></div><div></div></div> <div><div></div><div></div></div> <div><div></div><div></div></div> <div><div></div><div></div></div> <div><div></div><div></div></div> <div><div></div><div></div></div> <div><div></div><div></div></div> <div><div></div><div></div></div> <div><div></div><div></div></div> <div><div></div><div></div></div> <div><div></div><div></div></div> <div><div></div><div></div></div> <div><div></div><div></div></div> <div><div></div><div></div></div> <div><div></div><div></div></div> <div><div></div><div></div></div> <div><div></div><div></div></div> <div><div></div><div></div></div> <div><div></div><div></div></div> <div><div></div><div></div></div> <div><div></div><div></div></div> <div><div></div><div></div></div> <div><div></div><div></div></div> <div><div></div><div></div></div> <div><div></div><div></div></div> <div><div></div><div></div></div> <div><div></div><div></div></div> <div><div></div><div></div></div> <div><div></div><div></div></div> <div><div></div><div></div></div> <div><div></div><div></div></div> <div><div></div><div></div></div> <div><div></div><div></div></div> <div><div></div><div></div></div> <div><div></div><div></div></div> <div><div></div><div></div></div> <div><div></div><div></div></div> <div><div></div><div></div></div> <div><div></div><div></div></div> <div><div></div><div></div></div> <div><div></div><div></div></div> <div><div></div><div></div></div> <div><div></div><div></div></div> <div><div></div><div></div></div> <div><div></div><div></div></div> <div><div></div><div></div></div> <div><div></div><div></div></div> <div><div></div><div></div></div> <div><div></div><div></div></div> <div><div></div><div></div></div> <div><div></div><div></div></div> <div><div></div><div></div></div> <div><div></div><div></div></div> <div><div></div><div></div></div> <div><div></div><div></div></div> <div><div></div><div></div></div> <div><div></div><div></div></div> <div><div></div><div></div></div> <div><div></div><div></div></div> <div><div></div><div></div></div> <div><div></div><div></div></div> <div><div></div><div></div></div> <div><div></div><div></div></div> <div><div></div><div></div></div> <div><div></div><div></div></div> <div><div></div><div></div></div> <div><div></div><div></div></div> <div><div></div><div></div></div> <div><div></div><div></div></div> <div><div></div><div></div></div> <div><div></div><div></div></div> <div><div></div><div></div></div> <div><div></div><div></div></div> <div><div></div><div></div></div> <div><div></div><div></div></div> <div><div></div><div></div></div> <div><div></div><div></div></div> <div><div></div><div></div></div> <div><div></div><div></div></div> <div><div></div><div></div></div> <div><div></div><div></div></div> <div><div></div><div></div></div> <div><div></div><div></div></div> <div><div></div><div></div></div> <div><div></div><div></div></div> <div><div></div><div></div></div> <div><div></div><div></div></div> <div><div></div><div></div></div> <div><div></div><div></div></div> <div><div></div><div></div></div> <div><div></div><div></div></div> <div><div></div><div></div></div> <div><div></div><div></div></div> <div><div></div><div></div></div> <div><div></div><div></div></div> <div><div></div><div></div></div> <div><div></div><div></div></div> <div><div></div><div></div></div> <div><div></div><div></div></div> <div><div></div><div></div></div> <div><div></div><div></div></div> <div><div></div><div></div></div> <div><div></div><div></div></div> <div><div></div><div></div></div> <div><div></div><div></div></div> <div><div></div><div></div></div> <div><div></div><div></div></div> <div><div></div><div></div></div> <div><div></div><div></div></div> <div><div></div><div></div></div> <div><div></div><div></div></div> <div><div></div><div></div></div> <div><div></div><div></div></div> <div><div></div><div></div></div> <div><div></div><div></div></div> <div><div></div><div></div></div> <div><div></div><div></div></div> <div><div></div><div></div></div> <div><div></div><div></div></div> <div><div></div><div></div></div> <div><div></div><div></div></div> <div><div></div><div></div></div> <div><div></div><div></div></div> <div><div></div><div></div></div> <div><div></div><div></div></div> <div><div></div><div></div></div> <div><div></div><div></div></div> <div><div></div><div></div></div> <div><div></div><div></div></div> <div><div></div><div></div></div> <div><div></div><div></div></div> <div><div></div><div></div></div> <div><div></div><div></div></div> <div><div></div><div></div></div> <div><div></div><div></div></div> <div><div></div><div></div></div> <div><div></div><div></div></div> <div><div></div><div></div></div> <div><div></div><div></div></div> <div><div></div><div></div></div> <div><div></div><div></div></div> <div><div></div><div></div></div> <div><div></div><div></div></div> <div><div></div><div></div></div> <div><div></div><div></div></div> <div><div></div><div></div></div> <div><div></div><div></div></div> <div><div></div><div></div></div> <div><div></div><div></div></div> <div><div></div><div></div></div> <div><div></div><div></div></div> <div><div></div><div></div></div> <div><div></div><div></div></div> <div><div></div><div></div></div> <div><div></div><div></div></div> <div><div></div><div></div></div> <div><div></div><div></div></div> <div><div></div><div></div></div> <div><div></div><div></div></div> <div><div></div><div></div></div> <div><div></div><div></div></div> <div><div></div><div></div></div> <div><div></div><div></div></div> <div><div></div><div></div></div> <div><div></div><div></div></div> <div><div></div><div></div></div> <div><div></div><div></div></div> <div><div></div><div></div></div> <div><div></div><div></div></div> <div><div></div><div></div></div> <div><div></div><div></div></div> <div><div></div><div></div></div> <div><div></div><div></div></div> <div><div></div><div></div></div> <div><div></div><div></div></div> <div><div></div><div></div></div> <div><div></div><div></div></div> <div><div></div><div></div></div> <div><div></div><div></div></div> <div><div></div><div></div></div> <div><div></div><div></div></div> <div><div></div><div></div></div> <div><div></div><div></div></div> <div><div></div><div></div></div> <div><div></div><div></div></div> <div><div></div><div></div></div> <div><div></div><div></div></div> <div><div></div><div></div></div> <div><div></div><div></div></div> <div><div></div><div></div></div> <div><div></div><div></div></div> <div><div></div><div></div></div> <div><div></div><div></div></div> <div><div></div><div></div></div> <div><div></div><div></div></div> <div><div></div><div></div></div> <div><div></div><div></div></div> <div><div></div><div></div></div> <div><div></div><div></div></div> <div><div></div><div></div></div> <div><div></div><div></div></div> <div><div></div><div></div></div> <div><div></div><div></div></div> <div><div></div><div></div></div> <div><div></div><div></div></div> <div><div></div><div></div></div> <div><div></div><div></div></div> <div><div></div><div></div></div> <div><div></div><div></div></div> <div><div></div><div></div></div> <div><div></div><div></div></div> <div><div></div><div></div></div> <div><div></div><div></div></div> <div><div></div><div></div></div> <div><div></div><div></div></div> <div><div></div><div></div></div> <div><div></div><div></div></div> <div><div></div><div></div></div> <div><div></div><div></div></div> <div><div></div><div></div></div> <div><div></div><div></div></div> <div><div></div><div></div></div> <div><div></div><div></div></div> <div><div></div><div></div></div> <div><div></div><div></div></div> <div><div></div><div></div></div> <div><div></div><div></div></div> <div><div></div><div></div></div> <div><div></div><div></div></div> <div><div></div><div></div></div> <div><div></div><div></div></div> <div><div></div><div></div></div> <div><div></div><div></div></div> <div><div></div><div></div></div> <div><div></div><div></div></div> <div><div></div><div></div></div> <div><div></div><div></div></div> <div><div></div><div></div></div> <div><div></div><div></div></div> <div><div></div><div></div></div> <div><div></div><div></div></div> <div><div></div><div></div></div> <div><div></div><div></div></div> <div><div></div><div></div></div> <div><div></div><div></div></div> <div><div></div><div></div></div> <div><div></div><div></div></div> <div><div></div><div></div></div> <div><div></div><div></div></div> <div><div></div><div></div></div> <div><div></div><div></div></div> <div><div></div><div></div></div> <div><div></div><div></div></div> <div><div></div><div></div></div> <div><div></div><div></div></div> <div><div></div><div></div></div> <div><div></div><div></div></div> <div><div></div><div></div></div> <div><div></div><div></div></div> <div><div></div><div></div></div> <div><div></div><div></div></div> <div><div></div><div></div></div> <div><div></div><div></div></div> <div><div></div><div></div></div> <div><div></div><div></div></div> <div><div></div><div></div></div> <div><div></div><div></div></div> <div><div></div><div></div></div> <div><div></div><div></div></div> <div><div></div><div></div></div> <div><div></div><div></div></div> <div><div></div><div></div></div> <div><div></div><div></div></div> <div><div></div><div></div></div> <div><div></div><div></div></div> <div><div></div><div></div></div> <div><div></div><div></div></div> <div><div></div><div></div></div> <div><div></div><div></div></div> <div><div></div><div></div></div> <div><div></div><div></div></div> <div><div></div><div></div></div> <div><div></div><div></div></div> <div><div></div><div></div></div> <div><div></div><div></div></div> <div><div></div><div></div></div> <div><div></div><div></div></div> <div><div></div><div></div></div> <div><div></div><div></div></div> <div><div></div><div></div></div> <div><div></div><div></div></div> <div><div></div><div></div></div> <div><div></div><div></div></div> <div><div></div><div></div></div> <div><div></div><div></div></div> <div><div></div><div></div></div> <div><div></div><div></div></div> <div><div></div><div></div></div> <div><div></div><div></div></div> <div><div></div><div></div></div> <div><div></div><div></div></div> <div><div></div><div></div></div> <div><div></div><div></div></div> <div><div></div><div></div></div> <div><div></div><div></div></div> <div><div></div><div></div></div> <div><div></div><div></div></div> <div><div></div><div></div></div> <div><div></div><div></div></div> <div><div></div><div></div></div> <div><div></div><div></div></div> <div><div></div><div></div></div> <div><div></div><div></div></div> <div><div></div><div></div></div> <div><div></div><div></div></div> <div><div></div><div></div></div> <div><div></div><div></div></div> <div><div></div><div></div></div> <div><div></div><div></div></div> <div><div></div><div></div></div> <div><div></div><div></div></div> <div><div></div><div></div></div> <div><div></div><div></div></div> <div><div></div><div></div></div> <div><div></div><div></div></div> <div><div></div><div></div></div> <div><div></div><div></div></div> <div><div></div><div></div></div> <div><div></div><div></div></div> <div><div></div><div></div></div> <div><div></div><div></div></div> <div><div></div><div></div></div> <div><div></div><div></div></div> <div><div></div><div></div></div> <div><div></div><div></div></div>			
---	--	--	--





Photograph C2.14: Existing view from a rural road on lower ground south of woodland on Banwell Hill looking southwest to southeast towards the F Route and the route of the proposed 400kV underground cables on the opposite side of the valley, just perceptible in the northern part of Section B backgrounded by the Somerset Levels and Moors (in Section B) and partly visible running across fields on the lower slopes of the Mendip Hills and in the valley, backgrounded by higher ground



Photograph C2.15 Part 1: Existing view from PRow AX21/5 running southwards down the hillside towards Manor Farm in Christon looking south towards the F Route and the route of the proposed 400kV underground cables on lower ground across fields on the opposite side of the valley in the southern part of Section C. The F Route is backgrounded by higher ground rising to Crook Peak (see also Photomontage VPC16)



Photograph C2.15 Part 2: Existing view from PRow AX21/5 running southwards down the hillside towards Manor Farm in Christon looking east and southeast towards the F Route and the route of the proposed 400kV underground cable screened by woodland surrounding Barleycombe Lodge (see also Photomontage VPC16)

A	22/03/2014	DCO SUBMISSION	JS	NH	NH
ISSUE	DATE	COMMENTS	DRAW	CHKD	APP'D

Title					
NATIONAL GRID (HINKLEY POINT C CONNECTION PROJECT)					
ENVIRONMENTAL STATEMENT					
VOLUME 5.7.3					
SECTION C: PHOTOGRAPHS OF EXISTING VIEWS BETWEEN 1 AND 3KM AND BEYOND 3KM					

nationalgrid			
National Grid plc, Warwick Technology Park, Gallows Hill, Warwick, CV34 6DA			
NG INVESTMENT No.	APPLICATION No.		IN
20897	EN020001		A3
FIGURE No.	DRAWING No.	SCALE	
7.17.6	IN1979.24.014	NTS	
SHEET 6 OF 8			ISSUE
			A





Photograph C2.16 & C2.S1b: Existing view from the West Mendip Way long distance route looking east towards the F Route and route of the proposed 400kV underground cables on lower ground on the opposite side of the Lox Yeo valley. Christon village visible on lower ground in the valley and the view extends towards the gap between Banwell Hill and Sandford Hill in the distance. The F Route is not perceptible due to backgrounding by the valley and vegetation, whilst the route of the proposed 400kV underground cables are visible across flat farmland on the valley floor

A	22/03/2014	DCO SUBMISSION	JS	NH	NH
ISSUE	DATE	COMMENTS	DRAW	CHK'D	APP'D
<div>Title</div> <div>NATIONAL GRID (HINKLEY POINT C CONNECTION PROJECT) ENVIRONMENTAL STATEMENT VOLUME 5.7.3</div> <div>SECTION C: PHOTOGRAPHS OF EXISTING VIEWS BETWEEN 1 AND 3KM AND BEYOND 3KM</div>					
<div><div>nationalgrid</div><div>National Grid plc, Warwick Technology Park, Gallowes Hill, Warwick, CV34 6DA</div></div>					
NG INVESTMENT No.		APPLICATION No.		IN A3	
20897		EN020001			
FIGURE No.		DRAWING No.		SCALE	
7.17.7		IN1979.24.014		NTS	
SHEET 7 OF 8				ISSUE A	





Photograph C3.1: Existing view from PRow AX6/19/20 on Hellenge Hill (southeast of the seating area adjacent to the West Mendip Way long distance route and the route of published Wild Walk 3 running along Roman Road) looking southeast towards the F Route (indistinguishable on lower ground in Section B), and towards the route of the proposed 400kV underground cables in Section B (where not screened by landform), towards the site of the proposed South of Mendip Hills CSE compound and towards the route of the proposed 400kV overhead line across the Somerset Levels and Moors in the distant and panoramic view

A	22/03/2014	DCO SUBMISSION	JS	NH	NH
ISSUE	DATE	COMMENTS	DRAW	CHK'D	APP'D
<div>Title</div> <div>NATIONAL GRID (HINKLEY POINT C CONNECTION PROJECT) ENVIRONMENTAL STATEMENT VOLUME 5.7.3</div> <div>SECTION C: PHOTOGRAPHS OF EXISTING VIEWS BETWEEN 1 AND 3KM AND BEYOND 3KM</div>					
<div><div>nationalgrid</div><div>National Grid plc, Warwick Technology Park, Gallows Hill, Warwick, CV34 6DA</div></div>					
NG INVESTMENT No.		APPLICATION No.		IN	
20897		EN020001		A3	
FIGURE No.		DRAWING No.		SCALE	
7.17.8		IN1979.24.014		NTS	
SHEET 8 OF 8				ISSUE	
				A	